



Shoreditch Stables Kingsland Road Shoreditch, E2 8DY

Location:

The Overground is a few minutes walk away taking you: north to Dalston and Highbury and Islington (where you can connect onto mainline services and the Victoria line); and south to Whitechapel, New Cross, Croydon and Crystal Palace. Old Street and Liverpool Street stations are within walking distance, and the area is well served by numerous bus routes. Five minutes away, there are cafes, restaurants, bars and art galleries in Hoxton Square and central Shoreditch.

Description:

A stunning private office space in a three-storey Victorian building. This beautifully light-filled workspace has lots of character with its high ceiling, exposed brick walls and wood floors. Shoreditch Stables benefits from a fantastic location on Kingsland Road and with its all-inclusive pricing, it is the perfect alternative to pricey leased office space in London. The space is available with or without ergonomic office chairs and desks included.

Features Include:

- Private space available - up 100 people
- Furnished or unfurnished
- Kitchen facilities
- Period features
- Flexible terms

Premises:

Office Space

Workstations:

1 - 100

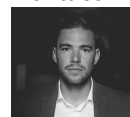
Area sq ft:

From 70 – 2,500 sqft

Rent:

Please call for pricing

Contact:



James Hennessy

020 3289 8001

0773 887 7944

james@domainofficesearch.com

